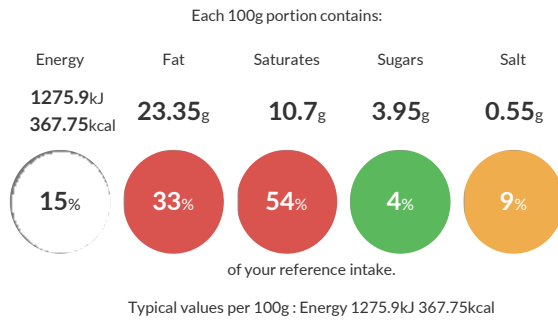


MINI PIE SELECTION

Mini short crust pastry cases filled with a selection of traditional pie fillings and topped with a light puff pastry lid, British Beef & Ale and succulent Chicken & Tarragon.

Reference Intake

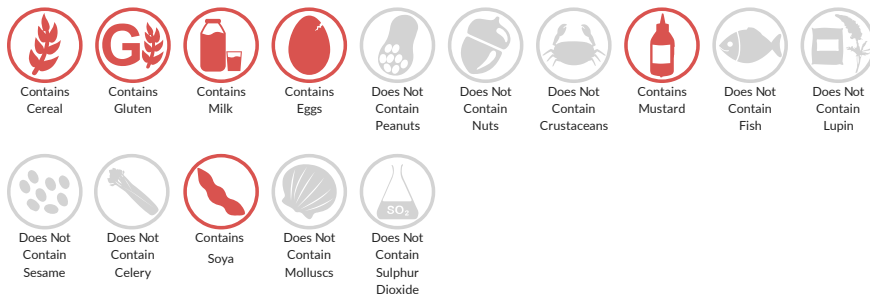


Nutritional Information

Typical Values	Per 100g
Energy	1275.9kJ 367.75kCal
Carbohydrates	33.2g
of which sugars	3.95g
Fat	23.35g
of which saturates	10.7g
Fibre	2.25g
Protein	5.8g
Salt	0.55g

Allergy Information

Key: Contains May Contain



Dietary Information

Key: Suitable for



Ingredients

Pastry Case (35%): **WHEAT** Flour, Vegetarian Margarine (Palm Oil, Rapeseed Oil, Water, Salt, Emulsifier [Mono-and-di-glycerides of fatty acids, Polyglycerol esters of fatty acids], Acidity Regulator [Citric Acid], Flavouring [**MILK**], Colour [Beta-carotene]), Vegetable Shortening (Palm & Coconut Oil), Maize Flour, Water, Tomato Purée.

Puff Pastry Lid (28%): **WHEAT** Flour, Margarine [Vegetable Oil, Water, Salt, Emulsifier [Mono & di-Glycerides of Fatty Acids]], Salt, Water **EGG** Glaze.

Beef & Ale Pie Filling: Beef Mince (12%), Water, Brown Ale (4%), Onion, Tomato Paste, Modified Maize Starch, Beef Stock (Beef Stock, Yeast Extract, Salt), Garlic, Sea Salt, Black Pepper, Dark Malt Flour **BARLEY**.

Chicken & Tarragon Pie Filling: Chicken (13%), Double Cream (**MILK**), Water, Onion, Butter, Modified Maize Starch, Fat Filled **MILK** Powder (Dried Skimmed **MILK**, Palm oil, Sugar, Emulsifier [**SOYA** Lecithin]), Tarragon, Dijon **MUSTARD** (Water, **MUSTARD** Seeds, Spirit Vinegar, Salt), Garlic, Sea Salt, White Pepper.

ALLERGENS: Are highlighted in **UPPERCASE** in ingredients listing.