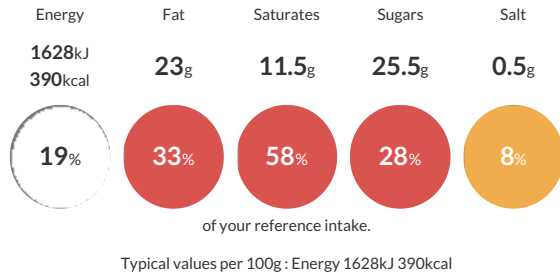


MINI CAKE SELECTION

A selection of classic British Cake miniatures. Spiced Carrot, Coffee, Blueberry & White Chocolate and Raspberry & Vanilla.

Reference Intake

Each 100g portion contains:

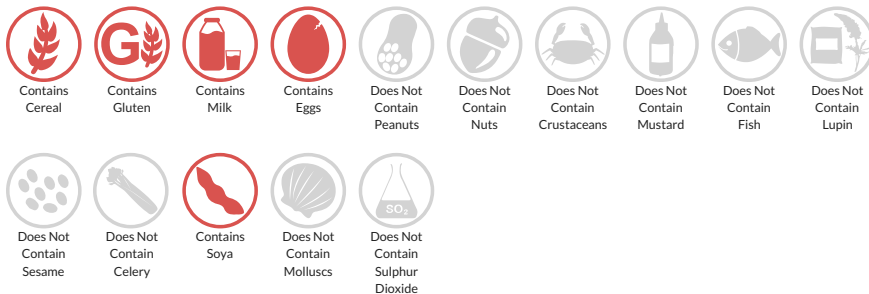


Nutritional Information

| Typical Values | Per 100g |
|--------------------|-------------------|
| Energy | 1628kJ 390kCal |
| Carbohydrates | 39.1g |
| of which sugars | 25.5g |
| Fat | 23g |
| of which saturates | 11.5g |
| Fibre | 0.7g |
| Protein | 6.3g |
| Salt | 0.5g |

Allergy Information

Key: Contains May Contain



Dietary Information

Key: Suitable for



Ingredients

Raspberry & Vanilla Cake: Sponge: Whole **EGG**, Vegetarian Margarine (Vegetable Fats and Vegetable Oils, Non Hydrogenated Palm and Rapeseed Oil, Water, Salt, Emulsifier E471, Acidity Regulator E330, Anti-oxidant E306, Flavouring, Acidity Regulator E331, Colour E160a), Sugar, Self-raising Flour (**WHEAT** Flour, Raising Agents E500, E341), Vanilla Cream Cheese Rosette (33%); (Cream Cheese (**MILK**), Sugar, Double Cream (**MILK**), Vanilla Flavour), Dried Raspberry (0.5%).

Coffee Cake: Sponge: Vegetarian Margarine (Vegetable Fats and Vegetable Oils (Non Hydrogenated Palm and Rapeseed Oil), Water, Salt, Emulsifier E471, Acidity Regulator E330, Anti-oxidant E306, Flavouring, Acidity Regulator E331, Colour E160a), Sugar, Whole **EGG**, Self-raising Flour (**WHEAT** Flour, Raising Agents E500, E341), Water, Coffee (0.7%), Coffee Cream Rosette: Cream Cheese (**MILK**), Sugar, Water, Coffee, Chocolate Coffee Bean (Sugar, Cocoa Mass, Cocoa Butter, Anhydrous Milk Fat (**MILK**), Low Fat Cocoa Powder, Emulsifier: **SOYA** Lecithin, Natural Vanilla, Coffee, Flavouring, Vegetable Fat, Emulsifier: **SOYA** Lecithin.

Blueberry & White Chocolate Cake: Sponge: Vegetarian Margarine (Vegetable Fats and Vegetable Oils (Non Hydrogenated Palm and Rapeseed Oil), Water, Salt, Emulsifier E471, Acidity Regulator E330, Anti-oxidant E306, Flavouring, Acidity Regulator E331, Colour E160a), Sugar, Whole **EGG**, Self-raising Flour [**WHEAT (GLUTEN)** Flour, Raising Agents E500, E341], Blueberry (9%) Blueberry & White Chocolate Cream Rosette; Cream Cheese (**MILK**), White Chocolate (11%) (Sugar, Whole **MILK** Powder, Cocoa Butter, Emulsifier(**SOYA** Lecithin), Natural Vanilla], Sugar, Blueberries (2%), Water, Modified Waxy Maize Starch, White Chocolate Curls (0.5%).

Carrot Cake: Sponge; Whole **EGG**, Vegetarian Margarine (Vegetable Fats and Vegetable Oils (Non Hydrogenated Palm and Rapeseed Oil), Water, Salt, Emulsifier E471, Acidity Regulator E330, Anti-oxidant E306, Flavouring, Acidity Regulator E331, Colour E160a), Sugar, Self-raising Flour (**WHEAT** Flour, Raising Agents E500, E341), Carrot (9%), Cinnamon, Nutmeg, Cream Cheese Rosette: Cream Cheese (**MILK**) (28%), Sugar, Orange Zest, Vanilla Flavour, Cinnamon, Sweet Carrot Topping.

ALLERGENS: Are highlighted in UPPERCASE within the ingredient listing.