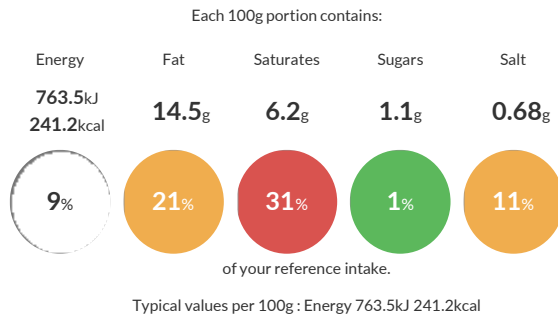


MINI COTTAGE PIES (FORMERLY MINI SHEPHERDS PIES)

Lean minced beef in a rich gravy topped with grated Cheddar cheese, carrot and chive potato mash and served in a crisp pastry case.

Reference Intake



Nutritional Information

| Typical Values | Per 100g |
|--------------------|----------------------|
| Energy | 763.5kJ 241.2kCal |
| Carbohydrates | 22.7g |
| of which sugars | 1.1g |
| Fat | 14.5g |
| of which saturates | 6.2g |
| Fibre | 1.2g |
| Protein | 5.5g |
| Salt | 0.68g |

Allergy Information

Key: Contains May Contain



Dietary Information

Key: Suitable for



Ingredients

Water, **WHEAT** Flour (with Calcium, Iron, Niacin, Thiamin), Beef (14%), Dried Potato (6%), Margarine (Palm Oil, Coconut Oil, Rapeseed Oil, Water, Salt, Emulsifier (Mono- and Di-Glycerides of Fatty Acids), Acidity Regulator (Citric Acid, Sodium Citrates), Flavouring, Colour (Beta-Carotene)), Shortening (Palm Oil, Rapeseed Oil), Maize Flour, Carrot, Onion, Single Cream (**MILK**), Tomato Purée, Modified Maize Starch, Cheddar Cheese (1%) (**MILK**) (Contains Colour (Annatto), Chive, Beef Stock (Beef Stock, Yeast Extract, Salt), Rapeseed Oil, Tomato Paste, Sea Salt, Black Pepper.

ALLERGENS: Are highlighted in **UPPERCASE** in the ingredients list.